

WELCOME TO THE MARSH MATTERS NEWSLETTER, A MONTHLY PUBLICATION TO KEEP OUR VALUED MEMBERS, VISITORS AND VOLUNTEERS IN THE LOOP ABOUT THE HAPPENINGS OF THE WYE MARSH!

Fall colours are beginning to show at Wye Marsh, from the oranges & reds in the woodlands to the golden cattails!



Bald Eagles have hooked beaks with sharp edges.

DID YOU KNOW?

October is Raptor Month. This global observance draws attention to Raptors (the birds, not the Toronto Raptors or in the kind in Jurassic Park), including identification, species monitoring, conservation efforts.

What makes a Raptor a Raptor?

Raptors are Birds of Prey that meet specific criteria that is used to more easily define them. All birds of Prey hunt for meat like insects, small mammals, or small reptiles but there are three specific characteristics of raptors:

1. hooked beaks with sharp edges
2. feet with sharp, curved claws or talons
3. keen eyesight

Hawks, owls, osprey, and eagles are all considered to be Raptors. Vultures are not. Great-Horned Owls, Bald Eagles, Osprey, and Broad-Winged Hawks are all Raptors that can regularly be seen in Simcoe County.



Osprey use their sharp, curved talons to hunt fish and other prey.



Great-Horned Owls are known for their keen eyesight.

Wye Marsh's Annual Fundraiser:

CONNECTING FOR CONSERVATION



Funds raised will support Wye Marsh Wildlife Centre's conservation, stewardship, and environmental education efforts.

Online Silent Auction

October 2 - 23, 2020

Place your bids online for deals on incredible prizes including artwork, gift certificates to local restaurants, excursions, spa packages & much more!

An excellent opportunity to get some holiday shopping done early while supporting Wye Marsh Wildlife Centre!

[Click here to enter the Silent Auction!](#)
(or visit the web address below)

Dine at Dock Lunch

October 2 - 4, 2020

Enjoy a \$20+tax special at the World Famous Dock Lunch in Penetang and a portion of the proceeds will be donated to Wye Marsh!

Special is choice of Chicken souvlaki, Fish and Chips, or Vegetarian Stuffed Pepper all served with salad and desert.

[Click here for Menu!](#)
(or visit the web address below)

WWW.WYEMARSH.COM/ANNUAL-FUNDRAISER



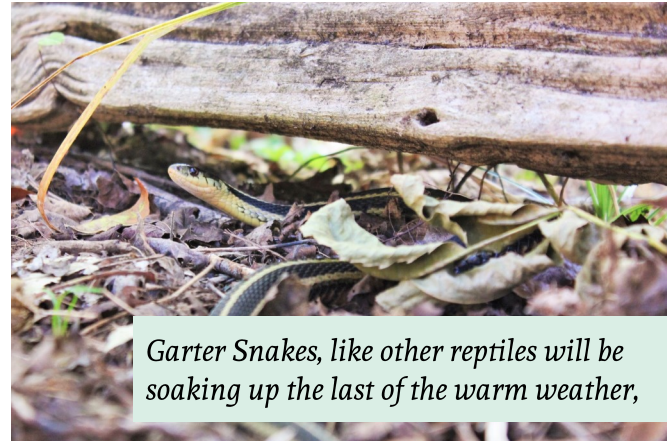
ON THE WILD SIDE:

As the leaves change colours so do the activities of different wildlife as many get ready for the cooler temperatures.

Turtles will be crossing roads once again in search of marshy and muddy areas to hibernate below the frost line, and baby Snapping Turtles are hatching from their sandy nests. Please be cautious hiking and driving, with an eye open for turtles crossing your path.

Forest critters are working away on their winter caches. Don't forget to get a bird feeder up in your backyard to help birds during the colder months when food is scarce. A combination of suet and seed is a great way to feed and attract a number of species.

With Halloween this month, bats are in the spotlight to set a spooky tone. No need to fear these nocturnal mammals—they are more afraid of us than we are of them. Plus they do us the favour of eating mosquitos and other pesky insects! Bats hibernate for the winter, resting in a deep sleep for up to 6 months. They drop their body temperature and will slow down their metabolism so they can last throughout the period of slumber. Most bats use underground sites like caves or mines, but some may use dwellings as well. Keep windows screened, and sheds closed when not in use to avoid gaining a winter guest.



Garter Snakes, like other reptiles will be soaking up the last of the warm weather,



Snapping Turtle hatchlings are about the size of a toonie, and will head for water.

MIGRATORY BIRDS: ON THE MOVE AGAIN

Birds make up the bulk of migrators, and many pass right through Simcoe County allowing birders a sight at species who do not regularly reside in our area. Some species will migrate south following the warmer weather where their prey will still be active, like Great-Blue Herons or Broad-Winged Hawks. For other species, like Snowy Owls, Simcoe County IS their southern ground compared to their Arctic breeding grounds.

Species on the move to look for in Simcoe County (including at Wye Marsh) during migration include Black-Throated Blue Warblers, Black and White Warblers, Yellow Warblers, Red-Shouldered Hawks, Sharp-Shinned Hawks, Saw Whet Owls, Red-Wing Blackbirds, Grackles, Wood Ducks, Tree Swallows, and Barn Swallows.

October 17, 2020 is Fall Global Big Day. Big Days are a 24 hour period in which birders are asked to head out in search of as many species as they can spot, and recording their sightings to eBird. eBird hosts these annual data collection events to help monitor avian species, their migration patterns, and population health. Fall Big Day runs from midnight to midnight in each local time zone, and collects data worldwide. On October Big Day 2019, more than 20,000 participants submitted 42,700 checklists with 6,709 species.

eBird can be used on your computer, or by downloading the app onto your smartphone. eBird is a program by the Cornell Lab of Ornithology.

Animal migration is one of the great wonders of our earth. Each spring and fall millions of animals from thousands of species make migrations big and small.



eBird

A Black-Throated Blue Warbler.

A MESSAGE FROM THE EXECUTIVE DIRECTOR:

We are glad to see people in the Centre again, it was a long six months with only staff in the building. Please let us know if you have any comments regarding the set-up for entry and exit and social distancing. This is new for everyone and we want to make your visit as pleasant as possible. Marsh School launched September 23 and is running until October 16, we are covering a broad range of topics with a focus on stewardship, conservation, and citizen science. We will be running additional programs in the future and will post the next set of dates as soon as possible.

We have some construction projects happening at Wye Marsh. A new 98' tower for internet and wifi was installed at the back of the Centre, and staff and volunteers will be doing some much needed repair work on the Bee House this fall. A new water main will be installed along the main road this fall as well, watch for signs as there may be some temporary changes to the entry road and the parking lot.

- Mary Ann Milne, Executive Director



A chickadee rests on the rails by the Log Cabin, waiting to greet a visitor with seed in their hand!

A MESSAGE FROM THE PRESIDENT OF THE BOARD OF DIRECTORS:

It is great to have additional access to more of the Marshes features such as the Visitors Center and most of the birds of prey. I hope you are all getting a chance to visit and renew old acquaintances. If the Almanac is correct we should have several weeks of good weather before the snow flies.

The Marsh has a big online event starting very soon, the virtual Annual Fundraiser: Connecting for Conservation. More details on page 2. The staff has been working hard and has done an amazing job of putting this event together. Please give it your full support and tell all your friends and family.

The Board is working on several initiatives including fundraising activities and recruitment of additional board members.

Our 2020 Fiscal year will end at the end of October. It will have been an incredible year for the Wye Marsh, like nothing it has experienced before. It also appears that Fiscal 2021 will start in a similar mode. We have learned a lot over the past 7 months and believe, that with your support, we can meet the challenges ahead. Thank you all in advance for your continued support.

- Dave Robertson, President of Friends of Wye Marsh Inc. Board of Directors



AN UPDATE TO VOLUNTEERS:

I hope you all have been keeping well during these uncertain times. At least mother nature blessed us with sunshine and beautiful fall colours!

It has been ~6 months since we have had volunteers with us here at Wye Marsh, and I am pleased to say that we are beginning to welcome our team back. There is a COVID-19 Health & Safety Policy in place for volunteers and staff until further notice. We are welcoming volunteers back in groups - starting with the Front Desk Volunteers, Trumpeter Swan Monitoring Volunteers, and Animal Care Volunteers. Other volunteer roles will be assessed for risk and added in due time.

I look forward to seeing familiar faces around the marsh—even if you are just stopping by for a walk, I would love to have a quick chat to catch up. If you have any comments, questions, or suggestions about volunteering at Wye Marsh during COVID-19, please let me know.

As always, the safety and well-being of the volunteers, staff, and visitors to Wye Marsh are paramount.

**-Amanda Swick,
Event & Volunteer Coordinator**

CURRENT VOLUNTEER OPPORTUNITIES:

Consider becoming to be part of our enthusiastic team! To sign up for or inquire about these positions, contact Amanda at ASWICK@WYEMARSH.COM or **705-526-7809 ext. 217**.

TRUMPETER SWAN MONITORING

ROLE:

As part of the Trumpeter Swan Monitoring Program, volunteers fill the feed buckets for the Trumpeter Swans at the Waterfowl Monitoring Station, as well as record swans sighted based on tag number.

TIME COMMITMENT:

9:30am-10:30am weekly on Saturdays from November-April.

FRONT DESK VOLUNTEERS

ROLE: Greeting visitors, answer the phone, provide direction, and process admission and gift store purchases. Training provided.

TIME COMMITMENT: Between 4-12 hours per month.

Shifts are either 9:30am-1:00pm (AM) or 1:00pm-4:30pm (PM).

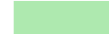


We are currently looking for volunteers to fill shifts Monday-Fridays, and can work with your schedule for what suits you best—either a weekly, or on call commitment.

VISITING WYE MARSH DURING COVID-19:

Wye Marsh is pleased to have the Visitor Centre, Birds of Prey Field, and Trail System open once again, 7 days a week!
 Trails & Birds of Prey Open: 9:00am—4:30pm
 Visitor Centre Open: 9:00am - 5:00pm

- 1 Visitor's Centre - OPEN
(Masks or face coverings required)
- 2 Birds of Prey Field - OPEN
- 3 Sugar Shack - Closed
- 4 Log Cabin - Closed

- 5 Canoe Dock - Closed
- 6 Waterfowl Monitoring Station - One Family at a time
- 7 Observation Tower - One Family at a time
- 8 Bee House - One Family at a time

-  Open Land/ Forest
-  Wetland/Open Water
-  Building

LEGEND

Hiking Trails 

Boardwalk 

Marsh March  1.9km
(Wheelchair & stroller accessible friendly)

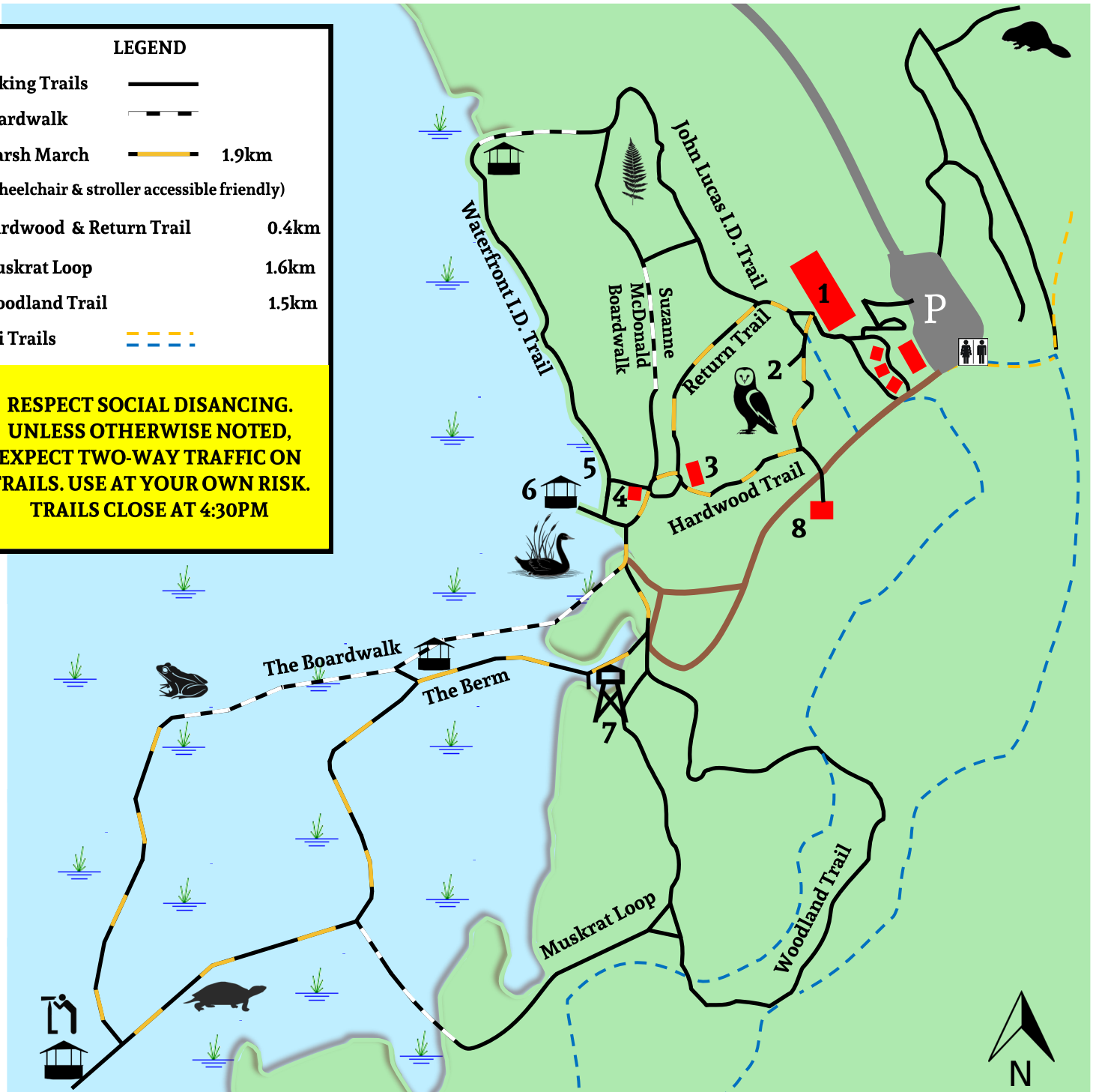
Hardwood & Return Trail 0.4km

Muskrat Loop 1.6km

Woodland Trail 1.5km

Ski Trails 

**RESPECT SOCIAL DISANCING.
UNLESS OTHERWISE NOTED,
EXPECT TWO-WAY TRAFFIC ON
TRAILS. USE AT YOUR OWN RISK.
TRAILS CLOSE AT 4:30PM**



Please use caution on all trails, walkways, boardwalks, waterways and property of the Wye Marsh. Appropriate hiking footwear is recommended. Slippery conditions exist when wet. Be aware that plant roots and loose rocks can create natural trip hazards when extending above paths. Immediately exit the trails if foul weather conditions threaten.